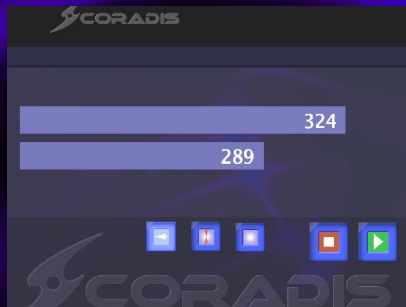


CORADIS

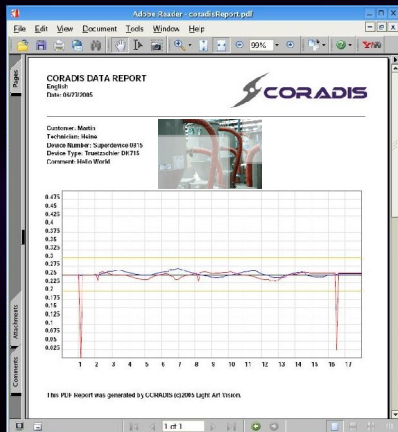


CORADIS

universal Machine-Web-Interface generating non-manipulatable dynamic PDF data documentation and quality reports direct from the data- source



CORADIS connects with almost any Device (Scales, Tourque Meters, Analyzers, Gages...) through RS232 Serial Ports and provides a Web Interface for operation.

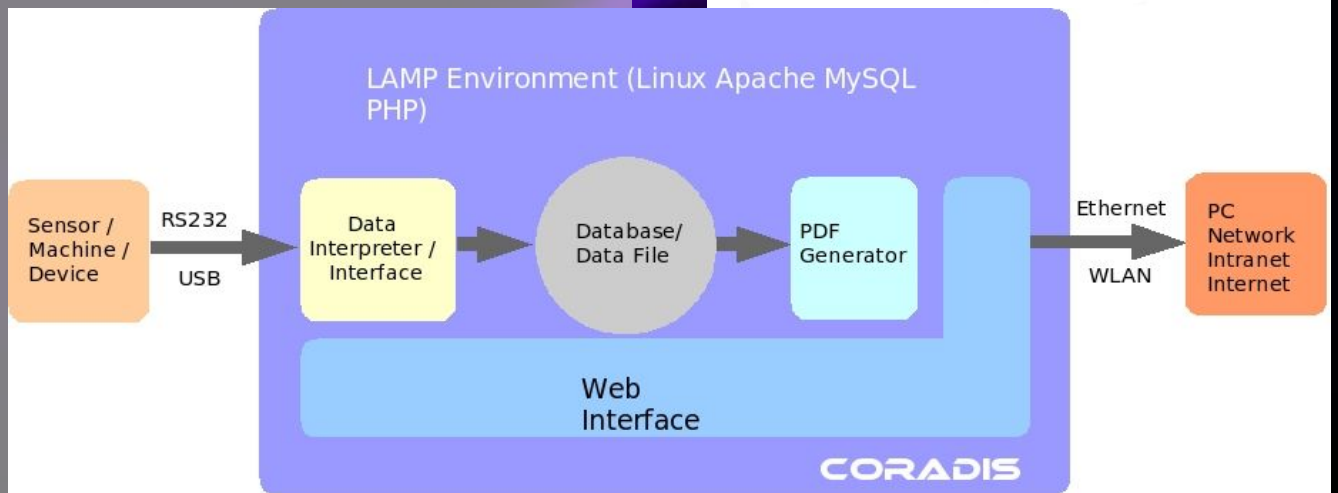


CORADIS

CORADIS

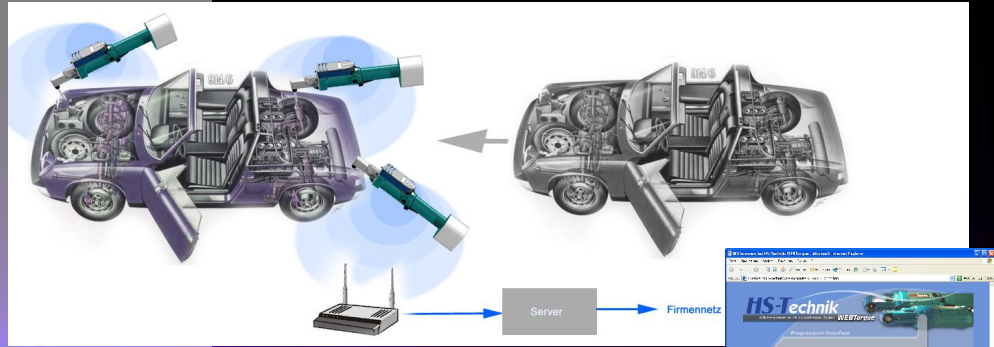
is an embedded system with a fullscale webserver and a web interface accessible with any web-browser.

CORADIS reads data from a device connected to its serial port (machine, scale, torque meter, analyzer, measuring equipment...) and generates a PDF report directly from the data of this device.



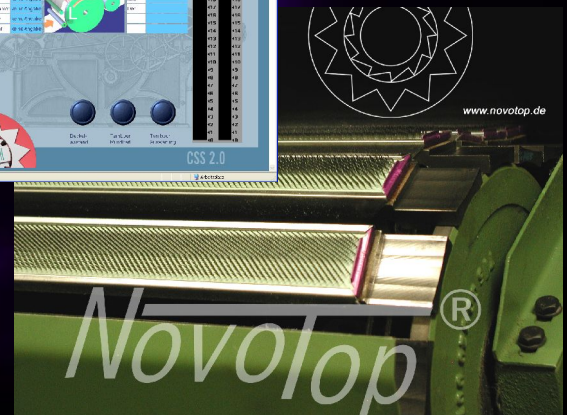
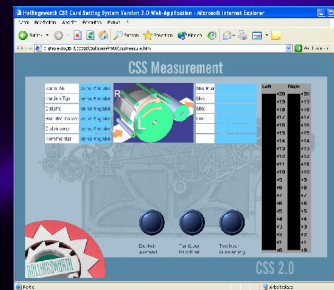
CORADIS

Endless Applications



...wherever data need to be documented...

- Automotive critical parts assembly quality proof.
- Textile raw material tests
- Medical patient data documentation
- Pharmaceutical drug production quality proof.
- Avionics annual inspection reports
- Food Industry – PDF records that document temperature and moisture monitoring.
- and more...





CORADIS

Specifications

Embedded Hardware:

Geode Processor

300MHz, 128MB RAM, 1GB Flash Disk.

2 Ethernet Ports, USB, RS232.

Optional: 802.11 Wireless

Optional: 60GB Hard drive

Fanless

Embedded Software:

OS: Based on RedHat9 Linux.

Apache, MySQL, PHP4

Administration:

Webmin, SSH, Telnet, FTP.

PONCA 2.0 (Content Management)

Network:

Webinterface, Samba Server

(Windows Network), NFS.

Max Data Sampling Speed:

19200 baud RS232.

(aprox. 10 Datasets / sec)

CORADIS is equipped

with everything a full scale

webserver comes with. No

compromises!

CORADIS